

REVISION OF *CHELYDRA STRAUSI* SCHMIDT, 1966 (TESTUDINES: CHELYDRIDAE: CHELYDROPSINAE) FROM THE LATE PLIOCENE OF WILLERSHAUSEN, GERMANY

[Revisión de *Chelydra strausi* Schmidt, 1966 (Testudines: Chelydridae: Chelydropsinae)
del Plioceno Superior de Willershausen, Alemania]

Hans-Volker KARL^{1,2}, Elke GRÖNING³, Carsten BRAUCKMANN³,
Mike REICH^{2,5} & Alexander GEHLER⁴

¹ Thüringisches Landesamt für Denkmalpflege und Archäologie. Humboldtstraße 11.
D-99423 Weimar. Email: hvkarl@web.de

² Geoscience Centre of the University of Göttingen. Department of Geobiology.
Goldschmidtstrasse 3. D-37077 Göttingen

³ Institut für Geologie und Paläontologie. TU Clausthal. Leibnizstraße 10. D-38678
Clausthal-Zellerfeld, Germany. Emails: elke.groening@tu-clausthal.de and carsten.
brauckmann@tu-clausthal.de

⁴ Geoscience Centre of the University of Göttingen. Department of Isotope Geology.
Goldschmidtstrasse 8. D-37077 Göttingen, Germany. Email: agehler@gudg.de

⁵ Geoscience Centre of the University of Göttingen. Museum, Collections & Geopark.
Goldschmidtstrasse 1-5. D-37077 Göttingen, Germany

(FECHA DE RECEPCIÓN: 2011-12-12)

BIBLID [0211-8327 (2012) Vol. espec. 9; 217-230]

ABSTRACT: The holotype (and hitherto single) specimen (part and counterpart) of *Chelydra strausi* Schmidt, 1966 from the Late Pliocene of the former clay pit of Willershausen (Lower Saxony, northwestern Germany) is revised for the first time. The main result of the present study is that it belong to the extinct genus *Chelydropsis* Peters, 1858, where it is preliminary assigned to *Cb. aff. nopcsai* (Szalai, 1934).

Key words: Late Pliocene, Willershausen, northwestern Germany, Testudines, Chelydropsinae, *Chelydra strausi* = *Chelydropsis aff. nopcsai*, revision.

RESUMEN: Se revisa por primera vez bajo aspectos nuevos el holotipo (y hasta ahora único ejemplar) (molde y contramolde) de *Chelydra strausi* Schmidt, 1966 del Plioceno tardío de la mina de arcilla en Willershausen am Harz (Baja Sajonia, noroeste de Alemania). El principal resultado de este estudio es que el ejemplar en realidad pertenece al género extinto *Chelydropsis* Peters, 1868 y provisionalmente a la especie *Ch. aff. nopcsai* (Szalai, 1934).

Palabras clave: Plioceno, Willershausen (NO de Alemania), Testudines, Chelydropsinae, *Chelydra strausi* = *Chelydropsis* aff. *nopcsai*, revisión.



Figure 1. Geographical position of the Late Pliocene Willershausen lake (from Google-Earth).

INTRODUCTION

The Upper Pliocene fossil lagerstätte Willershausen (Lower Saxony, Germany), a former clay pit, provided an extraordinary rich faunal and floral assemblage and probably is the most diverse fossil site of the European Pliocene (e.g. KRÜGER, 1979; FERGUSON & KNOBLOCH, 1998; MEISCHNER, 1998, 2000; GEHLER, 2003; REICH & GEHLER, 2011). However, the reptile material from Willershausen is restricted to a single specimen (part and counterpart) of a juvenile chelydrid turtle only, unearthed by Adolf Straus in 1959, and firstly described as the new species *Chelydra strausi* by his academic teacher Hermann Schmidt (SCHMIDT, 1966).

The present article demonstrates that *Chelydra strausi* Schmidt, 1966 really belongs to the extinct genus *Chelydropsis* Peters, 1868 where it is preliminary assigned to *Ch.* aff. *nopcsai* (Szalai, 1934).

A complete overview of the older literature on the fossil species of *Chelydra* and the Tertiary genus *Chelydropsis* in Central Europe has been compiled by KUHN (1964). In the last decades the following papers: CHKHIKVADZÉ (1989, 1990), DE BROIN (1977), DE LAPPARENT DE BROIN (2001), GAFFNEY & SCHLEICH (1994), GROSS (2002), HUTCHISON in STEYERMARK *et al.* (2008), MŁYŃSKI (1962, 1966, 1969, 1976, 1980a,b, 1981), PRITCHARD (1975), and SCHLEICH (1981, 1988) have added to our knowledge of these taxa.

The stratigraphic age and palaeoecology of the Willershausen Lagerstätte has been discussed in detail by MEISCHNER (2000). A short compilation was given by DLUSSKY *et al.* (2011).

TERMINOLOGY

Figure 2 shows a generalised reconstruction of the carapace and the plastron of *Emys* as an example for Testudines, without scale.

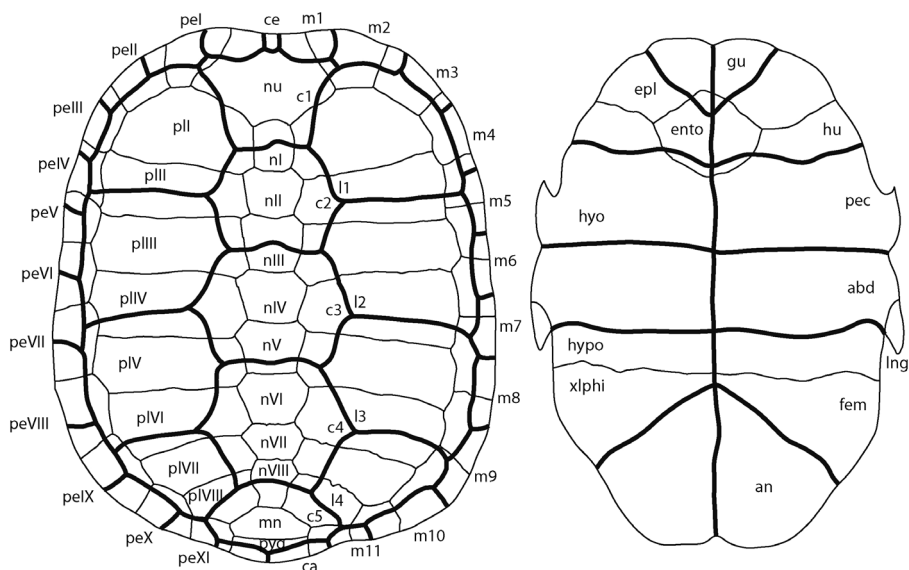


Figure 2. Terminology of the turtle shell (*Emys orbicularis*), remarks in the text.

Carapace plates: nuchal = nu, neurals = n I to n VIII, pleurals = pl I to VIII, peripherals = pe I to pe XI, metaneurals = mn I to II, pygal = py.

Carapace scutes: cervical = ce, centrals = c 1 to c 5, laterals = l 1 to l4, caudal = ca.

Plastron plates: epiplastrals = epi, entoplastron = ento, hyoplastron = hyo, hypoplastron = hypo, xiphiplastron = xiphi.

Plastron scutes: gulars = gu, humerals = hu, pectorals = pec, abdominals = ab, femorals = fe, annals = an.

SYSTEMATIC PALAEOONTOLOGY

Order Testudines, Linnaeus, 1758

Gigaorder Casichelydia Gaffney, 1975

Megaorder Cryptodira Gray, 1825

Parvorder Eucryptodira Gaffney, 1975

Suborder Polycryptodira Gaffney, 1984

Superfamily Chelydroidae Gray, 1831

Family Chelydridae Agassiz, 1857

REMARKS: In consideration of both, the fossil and modern species, the current state of systematics of the Chelydridae as compiled by HUTCHISON in STEYERMARK *et al.* (2008) is as follows:

Subfamily Protochelydrinae Gaffney, 1975

Denverus Hutchison & Holroyd, 2003

D. middletoni Hutchison & Holroyd, 2003

Protochelydra Erickson, 1973

P. zangerli Erickson, 1973

Subfamily Chelydropsinae Młynarski, 1980a

Chelydrasia Chkhikvadzé, 1999

Ch. minax Chkhikvadzé, 1971

Ch. poena Chkhikvadzé, 1971

Ch. apellanzini (Murelaga *et al.*, 1999)

Ch. decheni (H. v. Meyer, 1852)

Ch. sanctibenrici (De Broin, 1977)

“*Ch.*” *kusnetzovi* (Chkhikvadzé, 1985)

Chelydropsis Peters, 1868

Ch. murchisoni (Bell, 1832) (syn. *Ch. carinata* Peters, 1868)

Ch. sansaniensis (Bergounioux, 1935)

Ch. nopcsai (Szalai, 1934) (syn. *Ch. pontica* [Pidoplichko & Tarashchuk, 1960])

Subfamily Chelydrinae Gray, 1870

Chelydra Schweigger, 1812

Ch. serpentina (Linnaeus, 1758)

Ch. rossignoni (Bocourt, 1868)

Ch. acutirostris Peters, 1862

Macrochelys Gray, 1856

M. schmidti Zangerl, 1945

M. auffenbergi (Dobie, 1968)

M. temmincki (Troost, 1935)

Subfamily Chelydropsinae Młynarski, 1980a

Genus *Chelydropsis* Peters, 1868

HISTORY OF RESEARCH: *Chelydropsis* Peters, 1868 (based upon *Ch. carinata* Peters, 1868) was originally distinguished from *Chelydra* Schweigger, 1812 by three characters which are now regarded as artificial or caused by individual variation, respectively:

- (i) Two nuchal plates (“*doppelte Nuchalknochenplatte*”),
- (ii) double peripheral row (“*Marginalplatten*”= bony plates, marginals and supramarginals III to VIII but no horny shields or scutes),
- (iii) neurals more slender and angular (“*mehr winkelig*”) as in *Chelydra*.

Subsequent authors regarded *Chelydropsis* as superfluous, but Chkhikvadzé (1971) accepted this genus. DE LAPPARENT DE BROIN (2001) subdivided it into two species groups:

- i. Chelydropsis decheni* (v. Meyer, 1852) (plate 1, figure D-E; plate 2 figure A-D here) and *Ch. sanctihenrici* De Broin, 1977, both from the Oligocene and
- ii. Chelydropsis murchisoni* (Bell, 1832) (plate 1, figure A-B; plate 2, figure E here) from the Miocene.

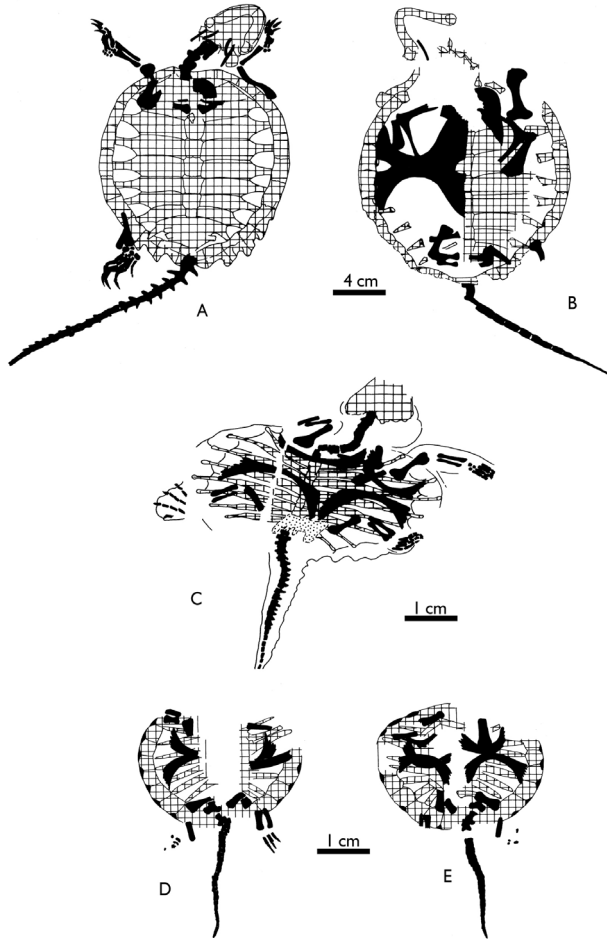


Plate 1. Figure A-B. *Chelydropsis carinata* Peters, 1868 (= *Ch. murchisoni* Bell, 1832), Miocene, Öbninggen (both slabs: A and B), after H. v. MEYER (1852). Ink sketch showing the distribution of skeletal remains and the long tail. Figure C. *Chelydropsis* aff. *nopcsai* (Szalai, 1934): holotype of "*Chelydra strausi* Schmidt, 1966", Late Pliocene Willershausen lake, after SCHMIDT (1966), ink sketch showing the distribution of skeletal remains and the long tail.

Figure D. *Chelydrasia decheni* (H. v. Meyer, 1852) (syn. *Chelydra decheni* H. v. Meyer, 1852), Oligocene, Rott (pit "Johanna Fundgrube"), ink sketch showing the distribution of skeletal remains and the short tail. A: after H. v. MEYER (1852), B: after H. v. MEYER (1865). Figure E. *Chelydrasia decheni* (H. v. Meyer, 1852) (syn. *Chelydra decheni* H. v. Meyer, 1852), Oligocene, Rott. A: Same specimen as in figure 5B, after H. v. MEYER (1852), pit "Johanna Fundgrube", posterior area of carapace. B: Nearly complete young individual in dorsal view, after H. v. MEYER (1865), pit "Krautgarten". Ink sketches showing the distribution of skeletal remains and the short tail. Figures A-E: Grid = carapace and skull, black = axial elements, extremities and plastron.

MEYNARSKI (1980a, b) added a third species group, which includes the following species:

iii. *Chelydropsis pontica* (Pidoplichko & Tarashchuk, 1960) which was originally described from its type horizon at the Plio-Pleistocene boundary in the Ukraine. Additional material was recorded from Pliocene deposits in other regions of Europe, as for examples in Moldavia (see also KHOSATZKI & REDKOZUBOV, 1989), Bohemia, Slovakia and probably Germany (DANILOV, 2005), and *Chelydropsis nopcsai* (SZALAI, 1934) from the Pliocene of Hungary and Central Europe. The taxon was originally described from a mandibular fragment with both dentaries and placed as an independent species in the genus *Trionyx* Geoffroy, 1809. MEYNARSKI (1981) regarded *Chelydropsis nopcsai* (SZALAI, 1934) as a senior synonym of *Ch. pontica* (Pidoplichko & Tarashchuk, 1960).

The most eastern Chelydropsinae are compiled by CHKHIKVADZÉ (1989, 1990) from Kazakhstan:

iv. *Chelydropsis minax* Chkhikvadzé (1971), Oligocene, Zaizan Basin;

v. *Chelydropsis kusnetzovi* Chkhikvadzé (1985), Pliocene, Pavrodar;

vi. *Chelydropsis poena* Chkhikvadzé (1971), Miocene, Zaizan Basin.

Up to now, only two species from the German Tertiary were assigned to *Chelydropsis*: *Ch. decheni* (Oligocene, Rott near Bonn) and *Ch. murchisoni* (Miocene, Dechbetten, Frechen: KLEIN & LIEVEN, 2007; STRAUCH, 1990; Hambach; Öhningen; Sandelzhausen, etc.; skulls from Unterwohlbach: GAFFNEY & SCHLEICH, 1994). A subspecies of the latter, *Ch. murchisoni staeschei* Młynarski, 1980a, was described from the Late Miocene of the Steinheim Basin in southern Germany. In comparison with *Ch. murchisoni*, the epiplastrals of *Ch. decheni* are small and not crossed by the humeropectoral sulcus. This area is not preserved in the holotype of "*Chelydra strausi*" (plate 3), which shows typical characters of a very young individual (plate 1, figure C). KLEIN & MÖRS (2003) reported further remains of *Chelydropsis* from the Late Pliocene of Hambach (Rhineland, NW Germany). The same authors also described remains of *Chelydropsis murchisoni* from the same locality, but of an older (Middle Miocene) age.

As already mentioned by H. v. MEYER (1852) and also discussed by SCHMIDT (1966), the main difference between *Chelydropsis decheni* and *Ch. murchisoni* is the length of the tail. With the same size and the same number of tail vertebrae, the tail of *Ch. murchisoni* is significantly longer than in *Ch. decheni*, but of similar proportions as in "*Chelydra strausi*". This was the reason for KARL *et al.* (2008) to determine the Willershausen specimen as *Chelydropsis* cf. *murchisoni*. *Chelydropsis decheni* was quite recently removed from *Chelydropsis* and assigned to the genus *Chelydrasia* Chkhikvadzé, 1999.

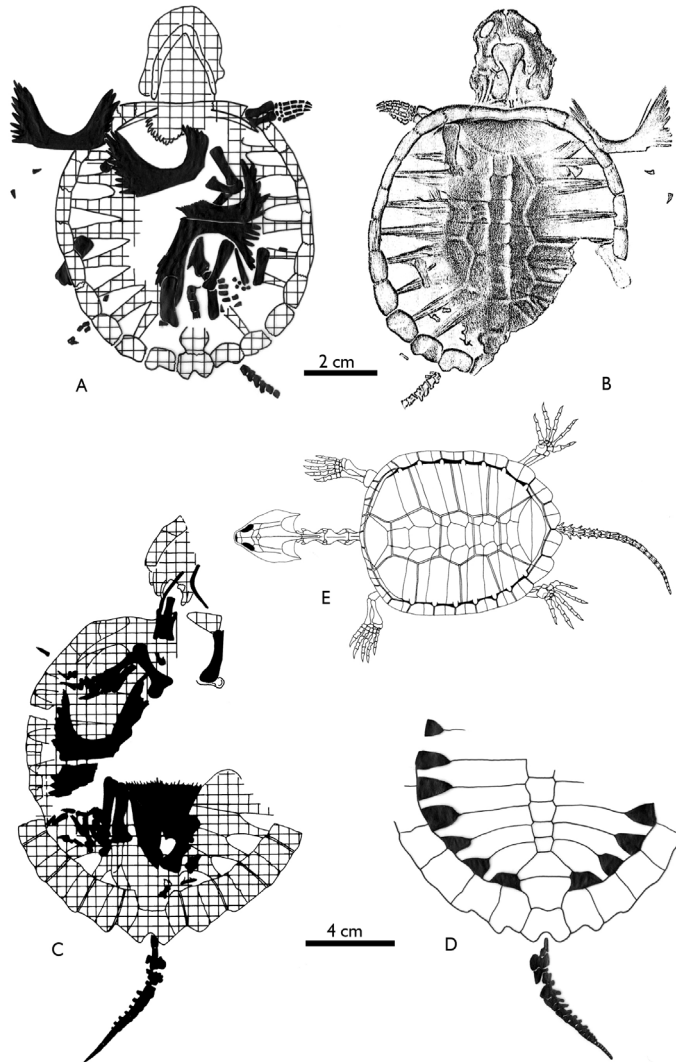


Plate 2. Figure A-B. *Chelydrasia decheni* (H. v. Meyer, 1852) (syn. *Chelydra decheni* H. v. Meyer, 1852), Oligocene, Rott, pit "Krautgarten", after H. v. MEYER (1856). A: Dorsal view. B: ventral view. Ink sketches showing the distribution of skeletal remains and the extremely short tail of this very young individual. Grid = carapace and skull, black = axial elements, extremities and plastron. Figure C-D. *Chelydrasia decheni* (H. v. Meyer, 1852) (syn. *Chelydra decheni* H. v. Meyer, 1852), Oligocene, Rott, pit "Krautgarten", after H. v. MEYER (1852). Ink sketch showing the distribution of skeletal remains and short tail. Grid = carapace and skull, black = axial elements, extremities and plastron. Figure E. *Chelydropsis carinata* Peters, 1868 (syn. *Chelydropsis murchisoni* staeschei Mlynarski, 1980a), Late Miocene, Steinheim Basin, after MLYNARSKI (1980a).

Chelydropsis aff. *nopcsai* (Szalai, 1934)

SYNONYMS:

- “Die amerikanische Schildkröte *Chelydra*”, SCHMIDT, 1961: 4;
- *Chelydra trausi* Schmidt, 1966: 25, fig. 1.
- “die einzige Schildkröte... Gattung *Chelydra*”, STRAUSS, 1966: 63.
- “Schildkröte der Gattung *Chelydra*... von H. Schmidt 1966 als neue Art BESCHRIEBEN”, STRAUSS, 1967: 22.
- “Sumpfschildkröte *Chelydra traussi* H. Schmidt 1967”, GERSDORF, 1968, 1977: 2.
- *Chelydra traussi* Schmidt, MŁYNARSKI, 1968: 352.
- “eine ausgestorbene Art der Alligatorschildkröten”, GERSDORF, 1977: 2.
- “eine Schildkröte der heute in Amerika lebenden Gattung *Chelydra*”, STRAUSS, 1978: 132.
- “eine neue Art der heute in Amerika heimischen Gattung *Chelydra*”, STRAUSS, 1979: 32.
- *Chelydropsis trausi* (Schmidt), GAUDANT, 1977: 3.
- *Chelydra traussi*, FERGUSON & KNOBLOCH, 1998: 282.
- “Alligator-Schildkröte” *Chelydra traussi* Schmidt 1966, KRÜGER, 1998: 186, unnumb. fig. (lower).
- “di tartarughe (*Chelydra*)”, MEISCHNER, 2000: 225.
- *Chelydropsis trausi* (Schmidt, 1966): GEHLER, 2003: 26.
- *Chelydropsis trausi* (Schmidt, 1966), *Chelydropsis murchisoni-sansaniensis*-Gruppe: KLEIN & MORS, 2003: 21-22.
- “eine juvenile Schildkröte der Familie Chelydridae”, GEHLER & REITNER, 2004: 91.
- *Chelydropsis* cf. *murchisoni* (Bell, 1832), KARL, GEHLER & REICH, 2008: 96.

MATERIAL: Holotype (part and counterpart), GPIG/GZG.W.05873a: “Straus 5873a+b”, Göttingen collection: nearly complete juvenile specimen (plate 1-C; plate 3, figures 1-2); the epithet “*trausi*” was chosen in honour of the palaeobotanist Dr. Adolf Straus (1904-1986), Berlin.

HOLOTYPE (PART): Small juvenile individual (hatchling; first or second year) in dorsal view as shown in plate 1. Measurements: length of trunk ~25 mm; width of carapace ~61 mm; length of tail ~34 mm, tail including 25 vertebrae. Further bones are preserved nearly in the origin position: both humeri, radii, and ulnae; metatarsals of the left hand; both femora, tibiae, and fibulae; metacarpals of the left foot, phalanges of the last three toes. Possible remains of skin impressions surround the shell (unossified peripherals), the neck and the right foot. The skull is preserved in palatal view without the broken rostral area. As regarded by SCHMIDT (1961, 1966), the main character of the Willershausen specimen is the relatively

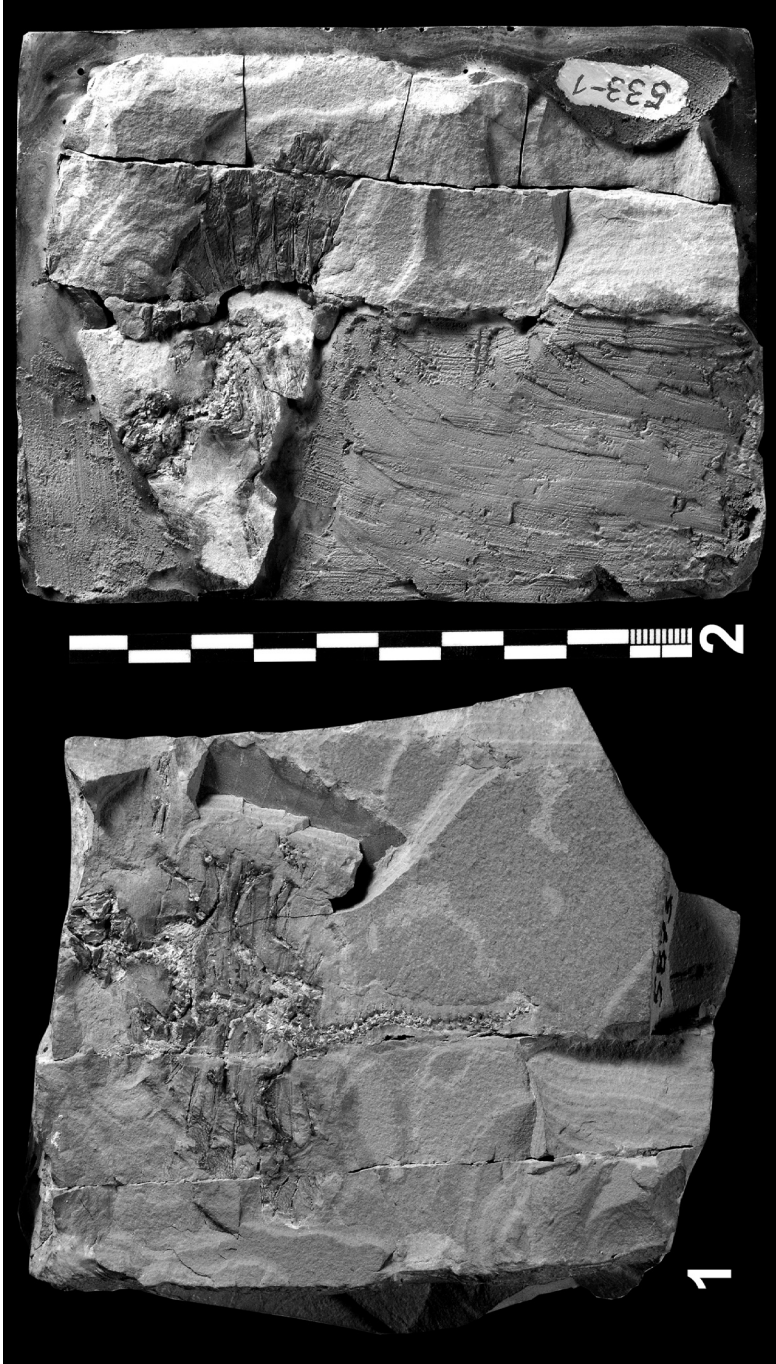


Plate 3. Figures 1-2. *Chelydropsis* aff. *nopscai* (Szalai, 1934): 1. Holotype (part) and 2. Holotype (counterpart) of "*Chelydra strausi* Schmidt, 1966", Late Pliocene, Willershausen, Lower Saxony, Germany. Fossil Lagerstätte Willershausen collection of the "Geoscience Museum", Göttingen University, GZG.W.05873a + b (original publication number #533), photograph GZG.

short distance of the lateral wings of the bridge (lateral hyo- and hypoplastral processes), but the individual was too immature for a differentiation on specific level. The maximal carapace length of "*Chelydropsis murchisoni*" is 35 cm and thus much larger than in the Willershausen specimen (DANILOV, 2005).

HOLOTYPE (COUNTERPART): Some remains of the skeleton corresponding with the plate (see above), including skull, neck, left arm and parts of the right shell and foot. The fossil is distributed over ten single rock fragments.

CONCLUSIONS

Chelydropsis murchisoni (Bell, 1832) and its younger synonym *Ch. carinata* Peters, 1868 are of Miocene age and thus distinctly older than the Willershausen specimen. Furthermore, due to the immature characters and the lack of important features of the skull of the latter, a direct comparison between *Ch. murchisoni* and "*Ch. strausi* Schmidt, 1966" is impossible. Therefore we prefer to assign the Willershausen specimen tentatively to the contemporaneous (Pliocene) species *Ch. aff. nopcsai* (Szalai, 1934).

BIBLIOGRAPHY

- BROIN, F. DE (1977): Contribution à l'étude des chéloniens. Chéloniens continentaux du crétacé supérieur et du tertiaire de France. *Mem. Mus. Nat. Hist. Natur.*, C, T. XXXVIII; 1- 323.
- CHKHIKVADZÉ, V. M. (1971): Pervaja nachodka tretičnoj čerepachi siemejstva Platysternidae. *Paleont. J.*, 3: 137-139.
- CHKHIKVADZÉ, V. M. (1989): Neogene turtles of the USSR. *Wiss. Beitr. Akad. Wiss. Grusinisch. SSR*, 102 pp., 19 figs. Tbilisi, Mecniereba [russ.].
- CHKHIKVADZÉ, V. M. (1990): Paleogene turtles of the USSR. *Wiss. Beitr. Akad. Wiss. Grusinisch. SSR*, 95 pp., 7 figs. Tbilisi, Mecniereba [russ.].
- CHKHIKVADZE, V.M. (1999): The history of the development of the Paleogene herpetofauna of the former Soviet Union Territory. Problems of paleobiology: 270-270. Tbilisi, Mecniereba [russ.].
- DANILOV, I. G. (2005): 9. Die fossilen Schildkröten Europas. In: FRITZ, U. (ed.): *Handbuch der Reptilien und Amphibien Europas*; Part 3/IIIB: *Schildkröten (Testudines) II*, pp. 329-448. Wiebelsheim (Aula).
- DLUSSKY, G. M.; KARL, H.-V.; BRAUCKMANN, C.; GRÖNING, E. & REICH, M. (2011): Two ants (Insecta: Hymenoptera: Formicidae: Formicinae) from the Late Pliocene of Willershausen, Germany, with a nomenclatural note on the genus *Camponotites*. *Paläont. Z.*, 85: 449-455.
- FERGUSON, D. K. & KNOBLOCH, E. (1998): A fresh look at the rich assemblage from the Pliocene sink-hole of Willershausen, Germany. *Review of Palaeobotany and Palynology*, 101: 271-286.

- GAFFNEY, E. S. & SCHLEICH, H. H. (1994): On *Chelydropsis murchisoni* (Bell, 1832) from the Middle Miocene locality of Unterwohlbach/South Germany. *Cour. Forsch. Inst. Senckenberg*, **173**: 197-213.
- GAUDANT, J. (1997): L'ichthyofaune pliocène de Willershausen am Harz (Basse Saxe, Allemagne) - un re'examen. *Stuttgarter Beiträge zur Naturkunde (Serie B)*, **257**: 1-31.
- GEHLER, A. (2003): *Diversitätsanalyse der Wirbeltierreste der oberpliozänen Fossilagerstätte Willershausen, Niedersachsen in der Sammlung des Geowissenschaftlichen Zentrums der Universität Göttingen*. Bachelor thesis, 46 pp., 6 pls.
- GEHLER, A. & REITNER, J. (2008): Die Vertebratenfauna der pliozänen Fossilagerstätte Willershausen (Niedersachsen). In: REITNER, J.; REICH, M. & SCHMIDT, G. (Eds.): *Geobiologie. 74. Jahrestagung der Paläontologischen Gesellschaft*. Göttingen, 02. bis 08. Oktober 2004. *Kurzfassungen der Vorträge und Poster. Universitätsdrucke Göttingen*: 90-91. Göttingen (Universitätsverlag).
- GERSDORF, E. (1968): Neus zur Ökologie des Oberpliozäns von Willershausen. *Berichte der Naturhistorischen Gesellschaft zu Hannover*. Beiheft, **6**: 83-94.
- GERSDORF, E. (1977): Über den Artenreichtum einer voreiszeitlichen Lebensgemeinschaft. *Beiträge zur Naturkunde Niedersachsens*, **30**: 1-6.
- GROSS, M. (2002): Aus der paläontologischen Sammlung des Landesmuseums Joanneum-Die fossilen Schildkröten (Testudines). *Joannea Geol. Paläont.*, **4**: 5-68.
- HUTCHISON, H. (2008): In: STEYERMARK, A. C.; FINKLER, M. S. & BROOKS, R. J.: *Biology of the Snapping Turtle (Chelydra serpentina)*. X+225 S., 63 figs., 17 tabs.; Baltimore (John Hopkins University Press).
- KARL, H.-V.; GEHLER, A. & REICH, M. (2008): Revision of the Pliocene *Chelydra strausi* Schmidt, 1966 (Testudines: Cryptodira: Chelydroidea). In: LÖFFLER, S.-B. & FREIWALD, A. (Eds.): *Jahrestagung der Paläontologischen Gesellschaft*. 8.-10. September 2008, Erlangen. *Erlanger Geologische Abhandlungen*, Sonderband, **6**: 96 pp. Erlangen.
- KHOSATZKI, L. I. & REDKOZUBOV, O. I. (1989): *Neogene turtles of Moldavia*. 92 pp. Kishinev (Shtiinca). [russ.].
- KLEIN, N. & LIEVEN, U. (2007): Eine Sumpfschildkröte (Bataguridae) aus dem Ober-Miozän der Niederrheinischen Bucht (NW-Deutschland). *Paläont. Z.*, **81**: 105-112.
- KLEIN, N. & MÖRS, T. (2003): Die Schildkröten (Reptilia: Testudines) aus dem Mittel-Miozän von Hambach (Niederrheinische Bucht, NW-Deutschland). *Palaeontographica*, **A**, **268** (1-3): 1-48.
- KRÜGER, F. J. (1979): Tongrube Willershausen, ein geologisches Naturdenkmal. *Aufschluss*, **30**: 389-408.
- KRÜGER, F. J. (1988): Die Tongrube Willershausen. In: WEIDERT, W. K. (Ed.): *Klassische Fundstellen der Paläontologie I*: 177-178, 200-201. Korb (Goldschneck).
- KUHN, O. (1964): Testudines. In: WESTPHAL, F. (Ed.): *Fossilium Catalogus, I: Animalia*, **107**: 299 pp. Gravenhage.
- LAPPARENT DE BROIN, F. DE (2001): The European turtle fauna from the Triassic to the present. *Dumerilia*, **4**: 155-217.

- MEISCHNER, D. (2000): Der pliozäne Teich von Willershausen am Harz. *In*: PINNA, G. & MEISCHNER, D. (Eds.): *Europäische Fossilagerstätten*: pp. 223-261, 9 figs. Springer-Berlin, Heidelberg, New York.
- MEISCHNER, D. (1998): Die ehemalige Tongrube Willershausen, ein Naturdenkmal von weltweiter Bedeutung. *In*: JÄCKEL, H.; DIESNER, R. & HILLBRECHT, W. (Eds.): *Willershausen am Harz. Umriss einer Dorfgeschichte*: 9-30. Willershausen (Heimatverein Willershausen).
- MEISCHNER, D. (1999): Il Pliocene di Willershausen. *In*: PINNA, G. (Ed.): *Alle radici delle storia naturale d'Europa*: 223-228. Milano (Jaca-Book).
- MEYER, H. v. (1852): Ueber *Chelydra murchinsoni* und *Chelydra decheni*. *Palaeontographica*, 2: 237-247.
- MLYNARSKI, M. (1962): Notes on the Amphibian and Reptilian Fauna of the Polish Pliocene and Early Pleistocene. *Acta zool. Cracov.*, VII (11): 177-194.
- MLYNARSKI, M. (1966): Die fossilen Schildkröten in den ungarischen Sammlungen. *Acta zool. Cracov.*; XI; 8: 223-288.
- MLYNARSKI, M. (1968): Die plio-pleistozänen Schildkröten Mitteleuropas. *Berichte der deutschen Gesellschaft für geologische Wissenschaften. (A: Geologie und Paläontologie)*, 13 (3): 351-356.
- MLYNARSKI, M. (1969): Fossile Schildkröten. *Neue Brehmbücherei*, 396: 128 pp. Wittenberg-Lutherstadt.
- MLYNARSKI, M. (1976): Testudines. *In*: KUHN, O. (Ed.): *Encyclopedia of Paleoherpology*; Part 7; 130 pp., 116 figs. Stuttgart, New York.
- MLYNARSKI, M. (1980a): Die tertiären Wirbeltiere des Steinheimer Beckens, Part II: The Chelonians of the Steinheim Basin, B: Chelydridae and some supplements concerning the Testudinoidea. *Palaeontographica*, Suppl. VIII: 1-35.
- MLYNARSKI, M. (1980b): Die pleistozänen Schildkröten Mittel- und Osteuropas (Bestimmungsschlüssel). *Folia Quaternaria*, 52: 1-43.
- MLYNARSKI, M. (1981): Chelydropsinae, the Euroasiatic Fossil Snapping Turtles (Chelydridae). *Chelonologica*, 2: 57-63.
- PETERS, K. F. (1868): Zur Kenntniss der Wirbelthiere aus den Miocänschichten von Eibiswald in Steiermark. I. Die Schildkrötenreste. *Sitzber. math.-naturwiss. Cl. Akad. Wiss.* 29: 111-124.
- PRITCHARD, P. C. H. (1975): *Directory of Turtles Genera. Chelonia*, 2 (5), San Francisco.
- REICH, M. & GEHLER, A. (2011): Als Elefanten durch den Landkreis Northeim streiften. Das Naturdenkmal Tongrube Willershausen. *In*: SENGER, E. (Ed.): *Deutsche Landkreise im Portrait: Landkreis Northeim [Dritte, völlig neue Ausgabe]*: 16-18. Oldenburg/Oldb. (Kommunikation & Wirtschaft GmbH).
- SCHLEICH, H. H. (1981): Jungtertiäre Schildkröten Süddeutschlands unter besonderer Berücksichtigung der Fundstelle Sandelzhausen. *Cour. Forsch. Inst. Senckenberg*, 48: 372 pp.
- SCHLEICH, H. H. (1988): Paläoherpetologische Materialien und Faunenspektren aus dem Kalktertiär des Mainzer Beckens (Oberoligozän-Untermiozän). *Geol. Jb.*, A 110: 289-306.
- SCHMIDT, H. (1961): Die amerikanische Schildkröte *Chelydra* im deutschen Pliozän und die Plastron-Reduktion bei dieser Gattung. *Paläont. Z.*, 35: 4.

- SCHMIDT, H. (1966): Eine Entwicklungsreihe bei Schildkröten der Gattung *Chelydra*. *N. Jb. Geol. Palaeont. Abb.*, **125**: 19-28.
- STRAUCH, F. (1990): Schildkrötenfunde aus den Inden-Schichten (Oberes Miozän) des rheinischen Braunkohlenreviers. *N. Jb. Geol., Paläont. Mb.*, **1990**: 308-320.
- STRAUS, A. (1966): Wald vor der Eiszeit. *Berliner Naturschutzblätter*, **10 (28)**: 57, 59-63.
- STRAUS, A. (1967): Zur Paläontologie des Pliozäns von Willershausen. *Berichte der Naturhistorischen Gesellschaft zu Hannover*, **III**: 15-24.
- STRAUS, A. (1978): Die botanische und zoologische Bedeutung des Pliozäns von Willershausen (Krs. Northeim). *Nortbeimer Heimatblätter*, **43**: 122-135.
- STRAUS, A. (1979): Paläontologische Ergebnisse der Grabungen im Pliozän von Willershausen (Krs. Northeim). *Sitzungsberichte der Gesellschaft Naturforschender Freunde zu Berlin (N.F.)*, **19**: 22-35.
- SZALAI, T. (1934): Die fossilen Schildkröten Ungarns. *Folia Zool. Hydrobiol.*, **6**: 97-142.