

## Medicine in film stills

### Infectious diseases: Measles



#### Technical details

**Title :** *Room Service*

**Country:** USA

**Year:** 1938

**Director:** William A. Seiter

**Music:** Roy Webb

**Screenwriter:** Morrie Ryskind, Allen Boretz (play) and John Murray (play).

**Cast:** Groucho Marx, Harpo Marx, Chico Marx, Lucille Ball, Ann Miller, Frank Albertson, Cliff Dunstan, Donald MacBride, Philip Loeb, Philip Word, Alexander Asro and Charles Halton.

**Color:** Black and White

**Runtime:** 78 minutes

**Genre:** Comedy

**Production Companies:** RKO Radio Pictures

The film takes place in the United States during the first half of the twentieth century

USA poster



A humorous view of exanthem due to measles



The film takes place in the United States at the start of the fifties  
USA poster

#### Technical details

**Title:** *How to Succeed in Business Without Really Trying*

**Country:** USA

**Year:** 1957

**Director:** Jean Negulesco

**Music:** Alfred Newman

**Screenwriter:** Katherine Albert, Zoe Akins (play: *The Greeks Had a Word for It*), Zoe Akins (play: *Loco*) and Dale Eunson (play: *Loco*).

**Cast:** Marilyn Monroe, Betty Grable, Lauren Bacall, David Wayne, Rory Calhoun, Cameron Mitchell, Alexander D'Arcy, Fred Clark, William Powell, George Duna, Percy Helton, Robert Adler, Harry Carter, Tudor Owen, Maurice Marsac, Emmett Vogan and Hermine Sterler.

**Color:** Color

**Runtime:** 95 minutes

**Genre:** Comedy, Drama, Romance

**Production Companies:** Twentieth Century-Fox Film Corporation



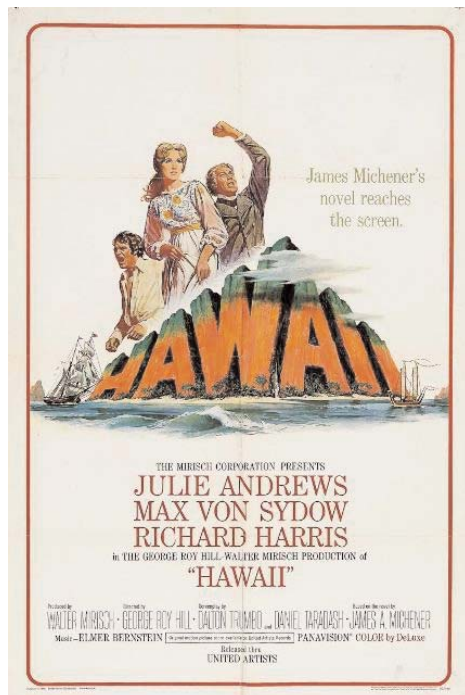
Fever



Retroauricular exanthem (site of onset). Loco Dempsey (Betty Grable) says his eyes are watering



Photophobia



### Technical details

**Title:** *Hawaii*

**Country:** USA

**Year:** 1966

**Director:** George Roy Hill

**Music:** Elmer Bernstein

**Screenwriter:** Dalton Trumbo, Daniel Taradash and James Michener (novel).

**Cast:** Julie Andrews, Max Von Sydow, Richard Harris, Gene Hackman, Carroll O'Connor, Jocelyne Lagarde, Manu Tupou, Ted Nobrigo, Elizabeth Logue, John Cullum, George Rose, Lou Antonio, Torin Thatcher, Michael Constantine and Malcolm Atterbury.

**Color:** Color

**Runtime:** 189 minutes

**Genre:** Drama, History

**Production Companies:** The Mirisch Corporation

The film takes place in Hawaii during the nineteenth century  
USA poster



Imported disease. Outbreak of measles in the indigenous population

José Elías García Sánchez<sup>1</sup>, Enrique García Sánchez<sup>1</sup> and María Lucila Merino Marcos<sup>2</sup>

<sup>1</sup>Departamento de Medicina Preventiva, Salud Pública y Microbiología Médica. Facultad de Medicina. Universidad de Salamanca (Spain).

<sup>2</sup>Departamento de Pediatría del Hospital Universitario de Salamanca (Spain).

Correspondence: José Elías García Sánchez. Facultad de Medicina. Avda. Alfonso X El Sabio s/n. 37007 Salamanca (Spain).

e-mail: [joegas@usal.es](mailto:joegas@usal.es)