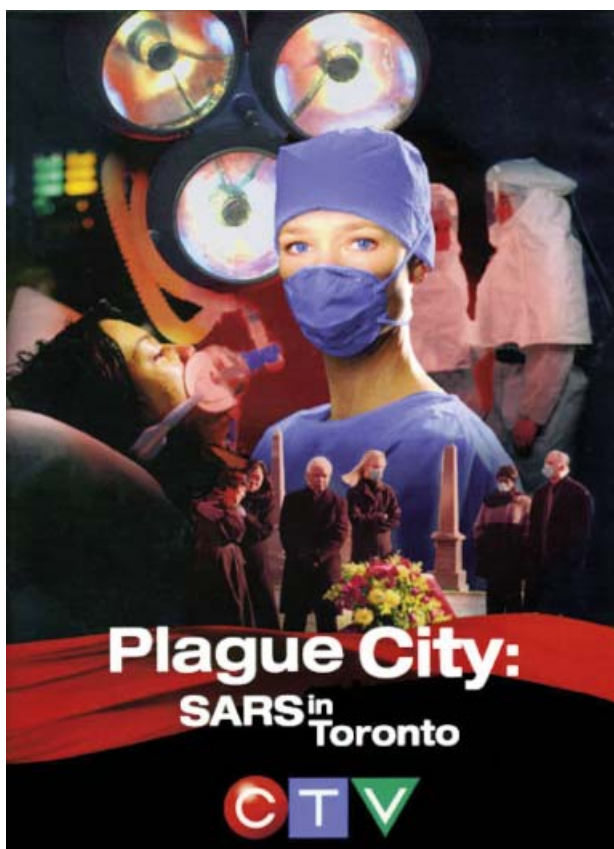


Infectious Diseases: Severe Acute Respiratory Syndrome



Action: 2003 [Guangdong, Hong Kong (China), Toronto (Canada), Geneva (Switzerland)].

Canadian Cover.

Technical Details

Original title: *Plague City: SARS in Toronto (TV)*.

Country: Canada.

Year: 2005.

Director: David Wu.

Music: Lawrence Shragge.

Photography: David Herrington.

Film editor: David Wu.

Cast: Kari Matchett, Ron White, Rick Roberts, Lannette New, Rahnuma Panthaky, Merwin Mondesir, Brian Markinson, James Gallanders, Leslie Carlson, Alina Lee, Grace Lynn Kung, James McGowan, Grahame Wood, David Dunbar, Alexandra Castillo,...

Color: Color.

Runtime: 89 minutes.

Genre: Drama, History.

Language: English.

Productions Companies: Canada Television and Cable Production Fund License Program (CTCPF), Canadian Film or Video Production Tax Credit (CPTC), Canadian Television (CTV), Canadian Television Fund, Government of Ontario: Ontario Film and Television Tax Credit Program, Lions Gate Television, National Bank of Canada TV and Motion Picture Group, Slanted Wheel Entertainment, Telefilm Canada - Equity Investment Program.

Synopsis: "In 2003, the Canadian city of Toronto was about to become the center of the first pandemic of the century. A doctor and several nurses made the alarm when they began arriving patients with symptoms of a mysterious and deadly virus. In total, there were 432 cases with 44 deaths. Dedicated to health workers in the city of Toronto, this telefilm remember the panic caused in Canada after the diagnosis of many cases of atypical pneumonia dubbed SARS (Severe acute respiratory syndrome)" (FILMAFFINITY).

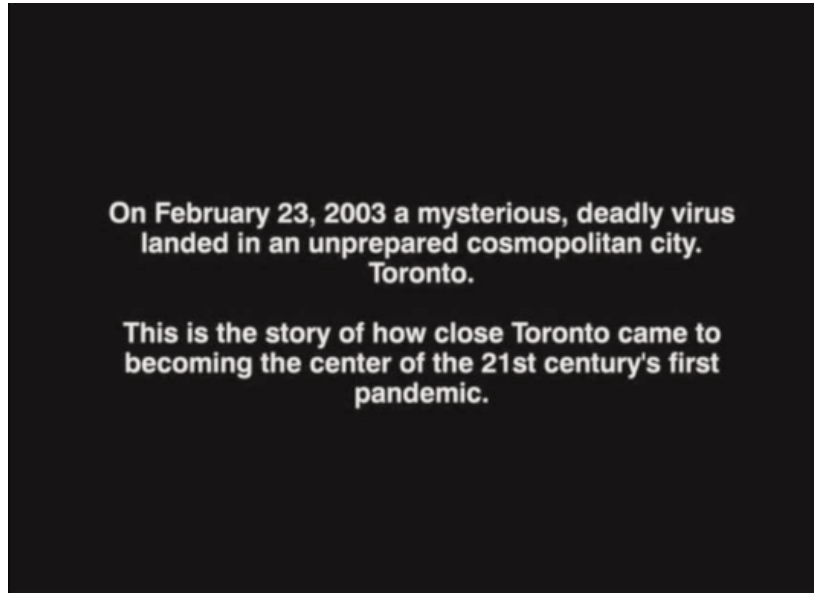
Links:

Plaga en la ciudad (TV). Available from:

<http://www.filmaffinity.com/es/film213991.html>

Plague City: SARS in Toronto (2005). Available from:

http://www.imdb.com/title/tt0439763/?ref=fn_al_tt_5



From China (November 2002) to Canada.



Epidemiology: Reservoir in nature: Chinese small mammals (civet cat).



Epidemiology: SARS-CoV is transmitted from person to person mainly by respiratory droplets. The virus also can be spread through secretions and fomites.



Epidemiology: SARS quickly spread through the air travel.



Symptoms: Respiratory distress.



Symptoms: High fever.



Symptoms: Cough.



Most people with SARS develop a serious pneumonia.



SARS is a potentially lethal disease.



Treatment: Supportive measures.

References

Poon LL, Guan Y, Nicholls JM, Yuen KY, Peiris JS. The aetiology, origins, and diagnosis of severe acute respiratory syndrome. *Lancet Infect Dis.* 2004;4:663-71.
Cheng VC, Chan JF, To KK, Yuen KY. Clinical management and infection control of SARS: Lessons learned. *Antiviral Res.* 2013 Aug 28. pii: S0166-3542(13)00224-6. doi: 10.1016/j.antiviral.2013.08.016. [Epub ahead of print]

José Elías García Sánchez¹, Enrique García Sánchez¹, Enrique García Merino²

¹Departamento de Medicina Preventiva, Salud Pública y Microbiología Médica. Facultad de Medicina. Universidad de Salamanca (Spain). IUCE (Instituto Universitario de Ciencias de la Educación). Universidad de Salamanca (Spain). ²Departamento de Salud. IES Ramón y Cajal. Valladolid (Spain).
Correspondence: José Elías García Sánchez. Facultad de Medicina. Avda. Alfonso X El Sabio s/n. 37007 Salamanca (Spain).

e-mail: joegas@usal.es